

# 1. The World

What does the world look like?



**Talk like a geographer:** a **compass** shows direction on a map or in real life.  
Remember the points with this **pneumonic**: **Never Eat Shredded Wheat**



**CONTINENT** =  
large land masses  
separated by  
oceans. E.g. Europe



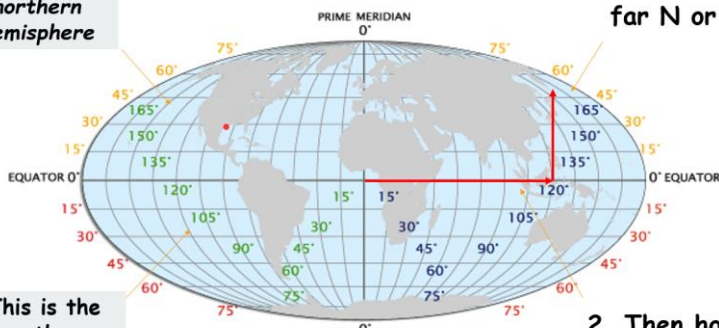
**COUNTRY** =  
part of a continent  
which has the  
same government.  
E.g. The UK

How do I describe places on a world map?

This is the  
**northern**  
hemisphere

## LONGITUDE AND LATITUDE

1. Read how  
far N or S



This is the  
**southern**  
hemisphere

2. Then how  
far E or W

## CLOCK

Continent

Longitude / latitude

Oceans / seas

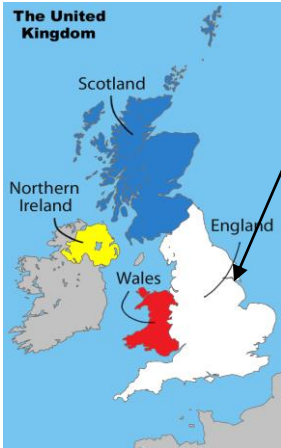
Countries (nearby)

Knowledge (about location!).



## 2. The UK

### What does the UK look like?

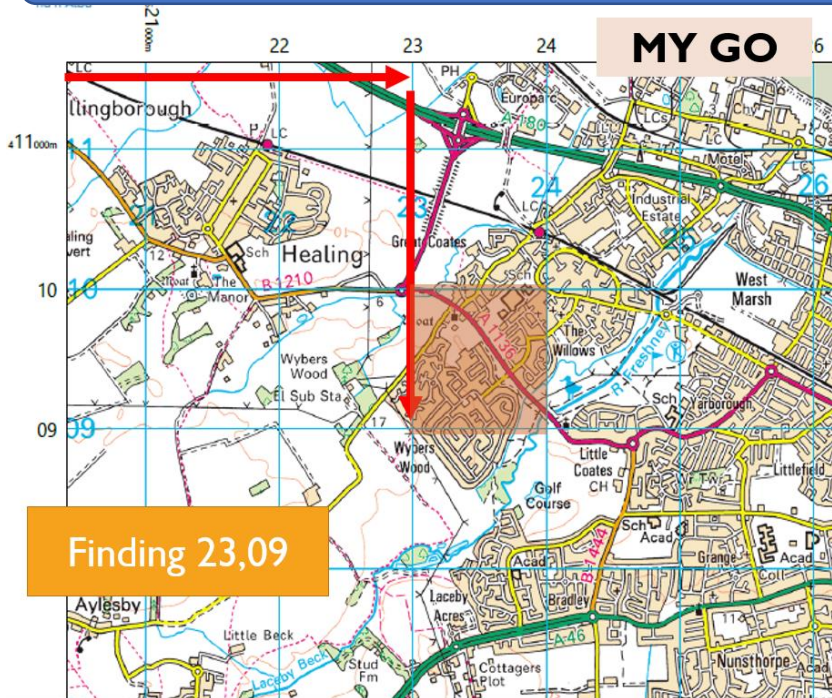


Grimsby is found in the **United Kingdom (UK)**. But the UK is a little bit complicated... It is split into **four nations**:

- England.
- Scotland.
- Wales.
- Northern Ireland.

Each nation has its own capital (e.g. Scotland - Edinburgh) but the **capital city** of the UK is **London**. This is where the UK government sits in the Houses of Parliament.

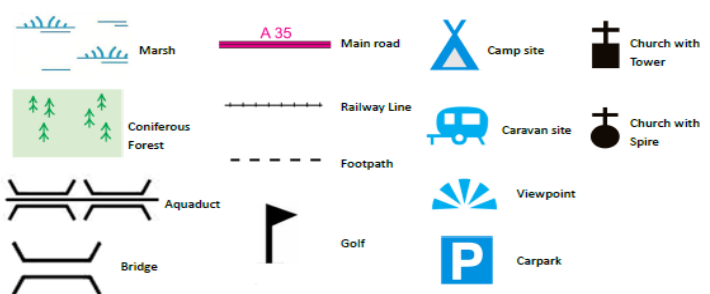
### How do I do a four-figure grid reference?



### How to do a four-figure grid reference...

1. Read **along** the X axis.
2. Then **up** the Y axis.
3. This will locate you the **bottom left-hand corner** of the box you want.

**Talk like a geographer:** Remember to use compass directions when describing places on a map. Symbols can also be useful as reference points - see the icons to the right.



# 3. Hot? Cold? Wet? Dry?



**Temperature** = how hot or cold it is.



**Precipitation** = rain, sleet or snow.



**Vegetation** = plants, trees bushes.

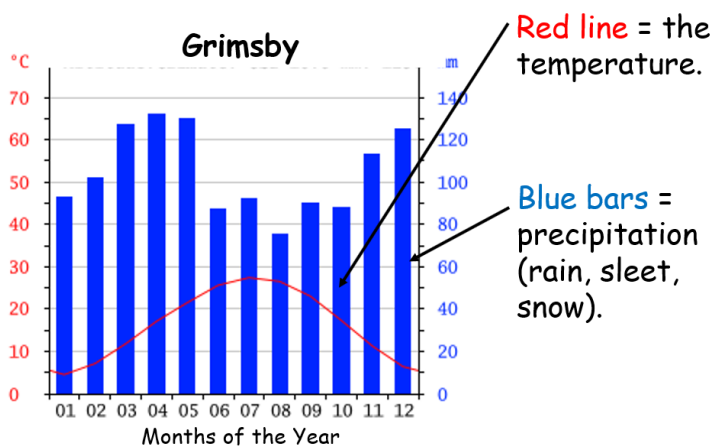


**Arid** = dry (no rainfall) with little to no vegetation.



**Humid** = lots of water vapour in the atmosphere.  
*Aka: hot, sticky weather.*

## Reading a climate graph



**Talk like a geographer**  
Use *GSE* to describe a graph...



Generally,  
Specifically,  
Exceptions include:

## What is the difference between weather and climate?



**Weather** is the condition of the atmosphere at a particular place over a short period of time. E.g. temperature, rainfall today.



**Climate** is the condition of the atmosphere in a place over a long period of time... e.g. Spain has a hot climate, England has a wet climate.



# 4. Rich? Poor?

## How do we classify rich and poor?

The world is divided into three types of country:



Developing Country

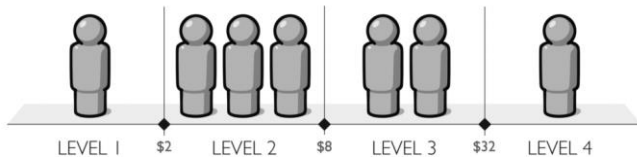


Emerging Country



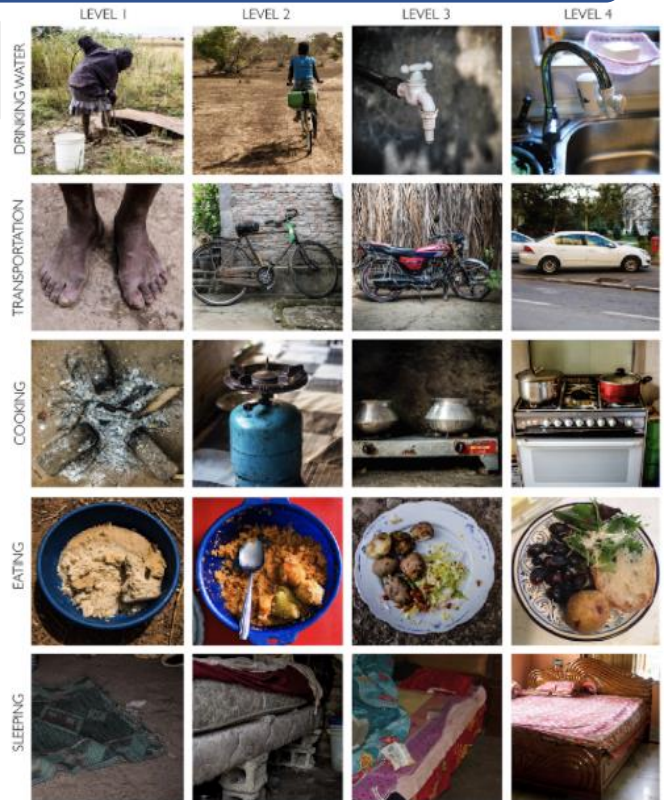
Developed Country

Think like a geographer:  
BUT Not everyone in a developing country is poor nor is everyone in a developed country rich. We can rank individual families on 'Levels' as seen to the right.



Income per person in dollars per day adjusted for price differences.

Source: Gapminder[3]



## Measuring quality of life



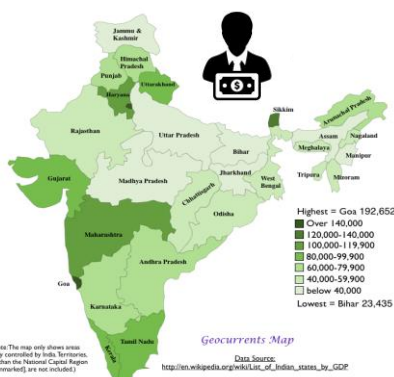
**Average Income** = how much money a person earns.



**Life Expectancy** = how long the average person lives for.



**Literacy Rates** = what percentage of adults can read and write.



Talk like a geographer  
Use GSE to describe a graph...



Generally, the richest states are in the south-west.



Specifically, the richest state is Goa on the western coast.



Exceptions include: Karnataka in the south-west with a low average income.